

## Georgetown Office Showroom Buildings

612-616 S Lucile Street  
Seattle

7,212 total SF office showroom  
(2 buildings)

612 building: 3,606 SF

616 building: 3,606 SF

7,600 SF land; zoned IG2U/85

Building is made from 80%  
recycled material with a Seattle  
Department of Planning "Green  
Factor" of 9.7 out of 10

Located in the heart of the  
Seattle Design Center District  
with immediate access to  
Hwy-99 and I-5

Permitted rooftop deck with  
expansive views of downtown  
Seattle and Mt. Rainier

Onsite parking and full HVAC

Sale price: \$1,499,000



### Location



### Contact

**Evan Lugar**

206.248.6505

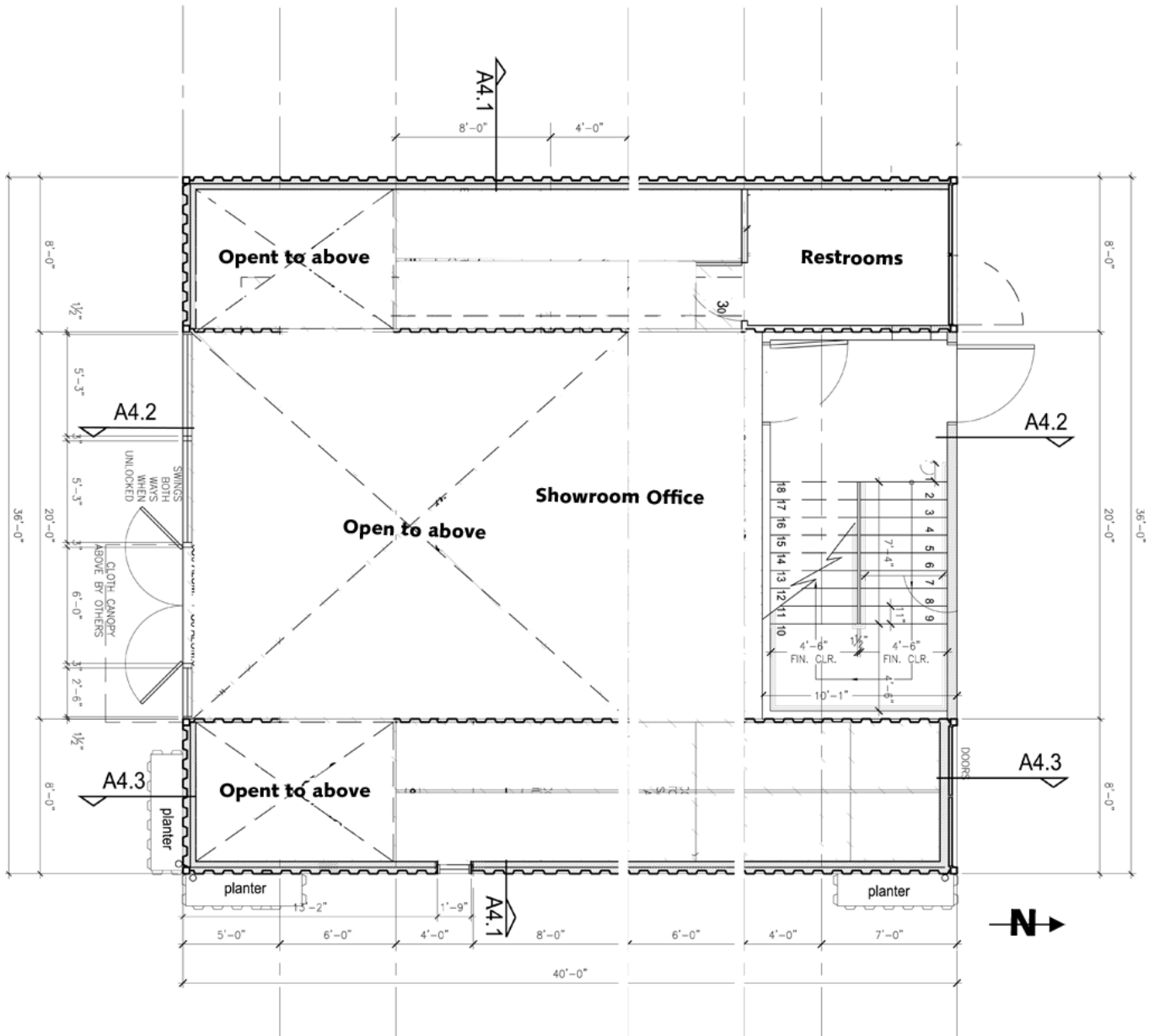
elugar@kiddermathews.com

**Corey Sollom**

206.296.9620

csollom@kiddermathews.com

**Georgetown Office Showroom Buildings**  
 First Floor (buildings are mirror images of each other)



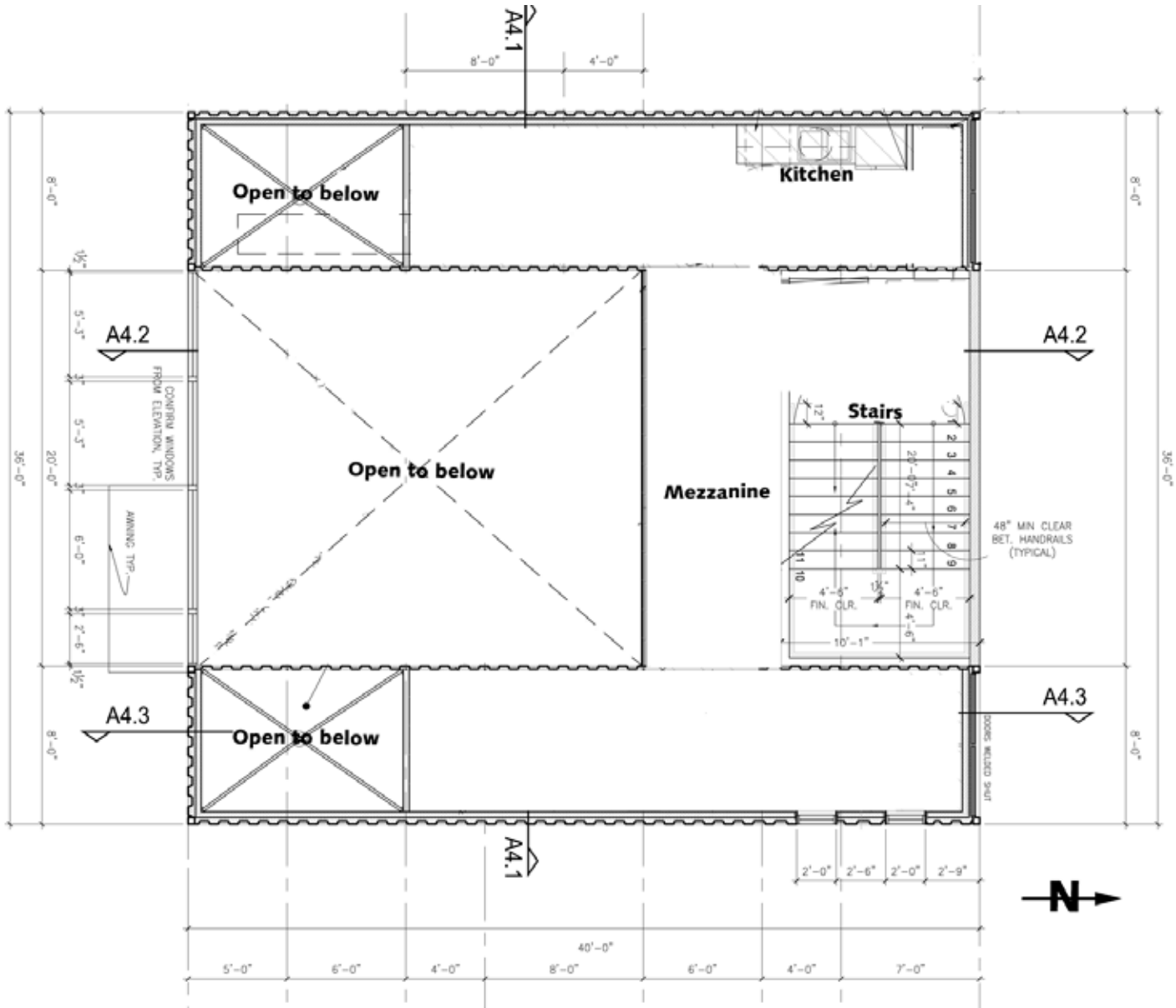
**Contact**

**Evan Lugar**  
 206.248.6505  
 elugar@kiddermathews.com

**Corey Sollom**  
 206.296.9620  
 csollom@kiddermathews.com

## Georgetown Office Showroom Buildings

Second Floor (buildings are mirror images of each other)



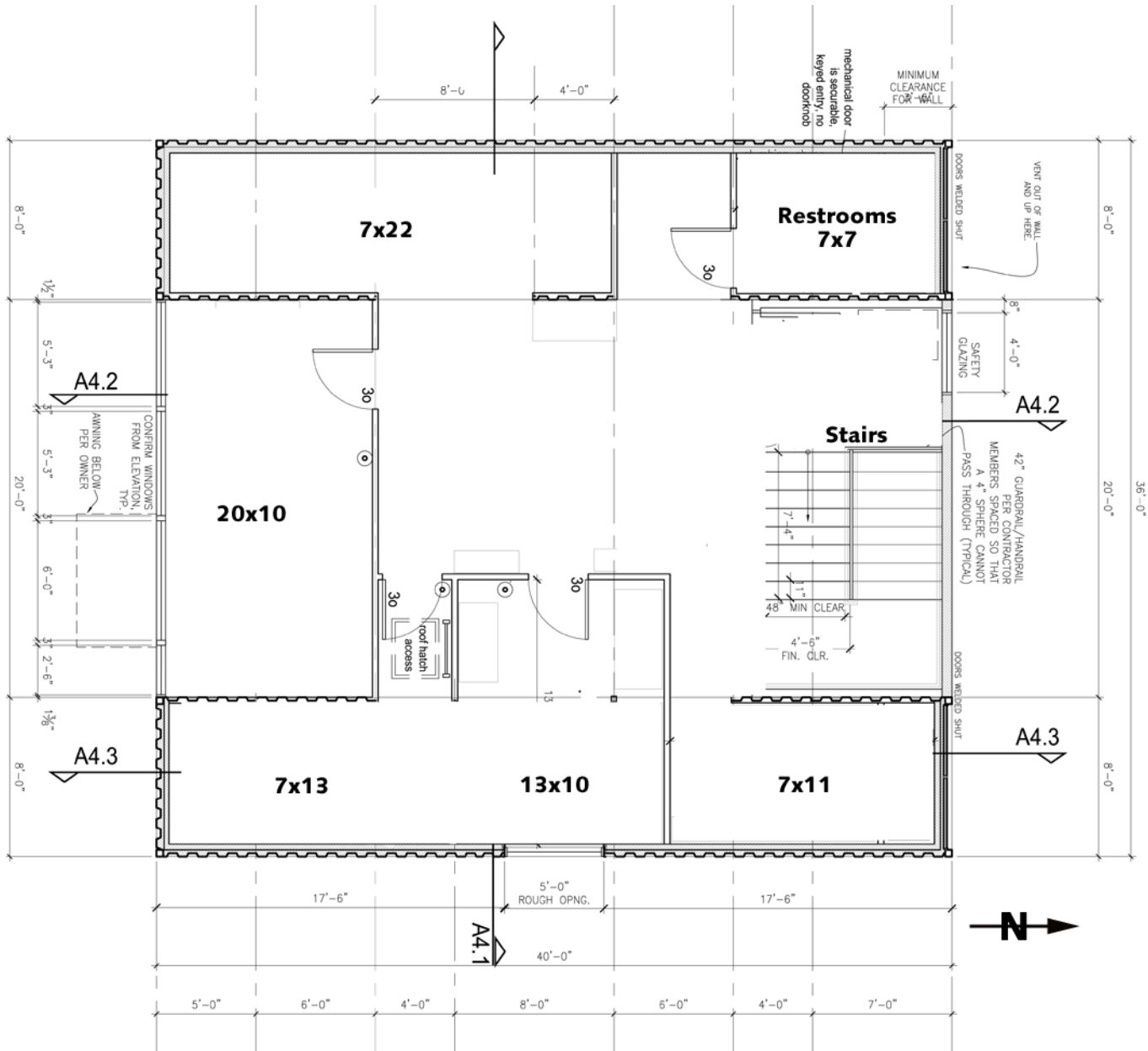
### Contact

**Evan Lugar**  
 206.248.6505  
 elugar@kiddermathews.com

**Corey Sollom**  
 206.296.9620  
 csollom@kiddermathews.com

## Georgetown Office Showroom Buildings

Third Floor (buildings are mirror images of each other)



### Contact

**Evan Lugar**  
 206.248.6505  
 elugar@kiddermathews.com

**Corey Sollom**  
 206.296.9620  
 csollom@kiddermathews.com